

REXWAY

PVC coated rigid
metal
conduit

for cable management

**ultimate
mechanical
protection**

**for enclosed
wire conductors**



TOGETHER WE ARE BETTER





INSTEEL

In an ever changing market, **INSTEEL** has forged itself a respected industry name...
We go beyond the call of duty, get to the root of the issues and

WORK REALLY, REALLY HARD!

Never satisfied with mediocrity, we strive to achieve more, often asking
"how can we improve?" After all, if you are not passionate about it, why do it!

Do we think out of the box?

ACTUALLY, WE DON'T BELIEVE THERE IS A BOX!

Established in 1998, we have broadened our horizons and are poised, ready to face
the challenges ahead, whilst always mindful of our absolute conviction towards

INTEGRITY & RELIABILITY

INSTEEL believes that business is about relationships -
long-term relationships.

The support of our business partners
both customers and suppliers
alike, is essential to the very vision and enthusiasm at Insteel.



T O G E T H E R W E A R E B E T T E R



REXWAY PVC

Coated Rigid
Metal Conduit



PVC Coated Rigid Metal Conduit

Material : Steel

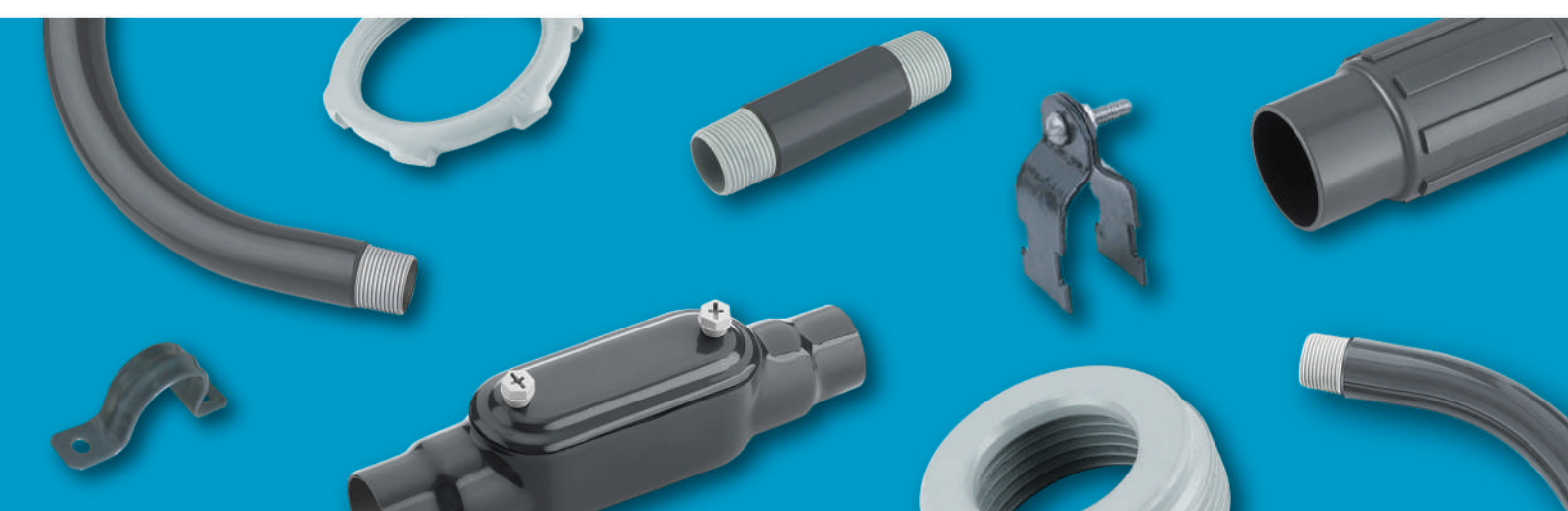
Hot Dipped Galvanised & PVC Coated

Manufactured in accordance with ANSI C80.1, it is ideal for most corrosive environments, like chemical fertilizer plants, gas transmission lines, offshore platforms, water and waste treatment plant.

Manufacturing Process

The inside diameter as well as the thread of the Hot Dipped Galvanised conduit are sprayed with 2 mils of grey urethane. After preheating the conduit, it is rolled through liquid plastid, achieving complete coverage of 40 mils in thickness, without pinholes or bubbles.

Item Code	Trade Size		Nominal Outside Diameter with PVC (mm)	Finished Wall Thickness (mm)	Length (m)	Approximate Weight per Length (kgs)
	Inch	mm				
P050	1/2	16	23.3	3.71	3.03	4.082
P075	3/4	21	28.7	3.79	3.03	5.398
P100	1	27	35.4	4.27	3.02	7.938
P125	1-1/4	35	44.2	4.45	3.02	10.750
P150	1-1/2	41	50.3	4.58	3.02	12.746
P200	2	53	62.3	4.78	3.02	17.055
P250	2-1/2	63	75.0	5.97	3.01	26.898
P300	3	78	90.9	6.28	3.01	35.017
P350	3-1/2	91	103.6	6.58	3.00	41.821
P400	4	103	116.3	6.79	3.00	49.396
P500	5	129	143.3	7.27	3.00	67.494
P600	6	155	170.3	7.83	3.00	90.627





Coupling

Material : Steel
Hot Dipped Galvanised

Item Code	Size (in)
PC-050	1/2"
PC-075	3/4"
PC-100	1"
PC-125	1-1/4"
PC-150	1-1/2"
PC-200	2"
PC-250	2-1/2"
PC-300	3"
PC-350	3-1/2"
PC-400	4"
PC-500	5"
PC-600	6"



90° Elbow

Material : Steel
Hot Dipped Galvanised

Item Code	Size (in)
PE90-050	1/2"
PE90-075	3/4"
PE90-100	1"
PE90-125	1-1/4"
PE90-150	1-1/2"
PE90-200	2"
PE90-250	2-1/2"
PE90-300	3"
PE90-350	3-1/2"
PE90-400	4"
PE90-500	5"
PE90-600	6"



One Hole Strap

Material : Steel
Hot Dipped Galvanised

Item Code	Size (in)
P1S-050	1/2"
P1S-075	3/4"
P1S-100	1"
P1S-125	1-1/4"
P1S-150	1-1/2"
P1S-200	2"
P1S-250	2-1/2"
P1S-300	3"
P1S-350	3-1/2"
P1S-400	4"
P1S-500	5"
P1S-600	6"

* Also available 45 degree elbow



Two Holes Strap

Material : Steel
Hot Dipped Galvanised

Item Code	Size (in)
P2S-050	1/2"
P2S-075	3/4"
P2S-100	1"
P2S-125	1-1/4"
P2S-150	1-1/2"
P2S-200	2"
P2S-250	2-1/2"
P2S-300	3"
P2S-400	4"
P2S-600	6"



Conduit Clamp

Material : Steel
Hot Dipped Galvanised

Item Code	Size (in)
PCL-050	1/2"
PCL-075	3/4"
PCL-100	1"
PCL-125	1-1/4"
PCL-150	1-1/2"
PCL-200	2"
PCL-250	2-1/2"
PCL-300	3"
PCL-400	4"
PCL-600	6"



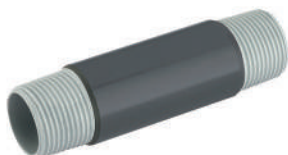
Locknut

Material : Steel
Hot Dipped Galvanised

Item Code	Size (in)
PL-050	1/2"
PL-075	3/4"
PL-100	1"
PL-125	1-1/4"
PL-150	1-1/2"
PL-200	2"
PL-250	2-1/2"
PL-300	3"
PL-400	4"
PL-600	6"

Nipples

Material : Steel
Hot Dipped Galvanised



Size (in)	Nipple Length				
	2"	2-1/2"	3"	4"	6"
1/2"	PNP200-050	PNP250-050	PNP300-050	PNP400-050	PNP600-050
3/4"	PNP200-075	PNP250-075	PNP300-075	PNP400-075	PNP600-075
1"	PNP200-100	PNP250-100	PNP300-100	PNP400-100	PNP600-100
1-1/4"	PNP200-125	PNP250-125	PNP300-125	PNP400-125	PNP600-125
1-1/2"	PNP200-150	PNP250-150	PNP300-150	PNP400-150	PNP600-150
2"		PNP250-200	PNP300-200	PNP400-200	PNP600-200
2-1/2"			PNP300-250	PNP400-250	PNP600-250
3"				PNP400-300	PNP600-300
3-1/2"				PNP400-350	PNP600-350
4"				PNP400-400	PNP600-400
5"					PNP600-500
6"					PNP600-600



Reducing Bushing

Material : Steel
Hot Dipped Galvanised

Item Code	Size (in)
PRB20-15	3/4" -- 1/2"
PRB25-15	1" -- 1/2"
PRB25-20	1" -- 3/4"
PRB32-15	1-1/4" -- 1/2"
PRB32-20	1-1/4" -- 3/4"
PRB32-25	1-1/4" -- 1"
PRB40-15	1-1/2" -- 1/2"
PRB40-20	1-1/2" -- 3/4"
PRB40-25	1-1/2" -- 1"
PRB40-32	1-1/2" -- 1-1/4"
PRB50-15	2" -- 1/2"
PRB50-20	2" -- 3/4"
PRB50-25	2" -- 1"
PRB50-32	2" -- 1-1/4"
PRB50-40	2" -- 1-1/2"



Ground Bushing - Insulated

Material : Malleable Iron
Hot Dipped Galvanised

Item Code	Size (in)
PGB-050	1/2"
PGB-075	3/4"
PGB-100	1"
PGB-125	1-1/4"
PGB-150	1-1/2"
PGB-200	2"
PGB-250	2-1/2"
PGB-300	3"
PGB-400	4"
PGB-600	6"



Conduit Body-Type LB

Material	Aluminium Epoxy Powder Coating	Ferrous Hot Dipped Galvanised
Size (in)	Item Code	Item Code
3/4"	PB7B-075A	PB7B-075F
1"	PB7B-100A	RB7B-100F
1-1/4"	PB7B-125A	RB7B-125F
1-1/2"	PB7B-150A	RB7B-150F
2"	PB7B-200A	RB7B-200F
2-1/2"	PB7B-250A	RB7B-250F
3"	PB7B-300A	RB7B-300F
4"	PB7B-400A	RB7B-400F



Conduit Body-Type LL

Material	Aluminium Epoxy Powder Coating	Ferrous Hot Dipped Galvanised
Size (in)	Item Code	Item Code
3/4"	PB7L-075A	PB7L-075F
1"	PB7L-100A	RB7L-100F
1-1/4"	PB7L-125A	RB7L-125F
1-1/2"	PB7L-150A	RB7L-150F
2"	PB7L-200A	RB7L-200F
2-1/2"	PB7L-250A	RB7L-250F
3"	PB7L-300A	RB7L-300F
4"	PB7L-400A	RB7L-400F



Conduit Body-Type LR

Material	Aluminium Epoxy Powder Coating	Ferrous Hot Dipped Galvanised
Size (in)	Item Code	Item Code
3/4"	PB7R-075A	PB7R-075F
1"	PB7R-100A	RB7R-100F
1-1/4"	PB7R-125A	RB7R-125F
1-1/2"	PB7R-150A	RB7R-150F
2"	PB7R-200A	RB7R-200F
2-1/2"	PB7R-250A	RB7R-250F
3"	PB7R-300A	RB7R-300F
4"	PB7R-400A	RB7R-400F



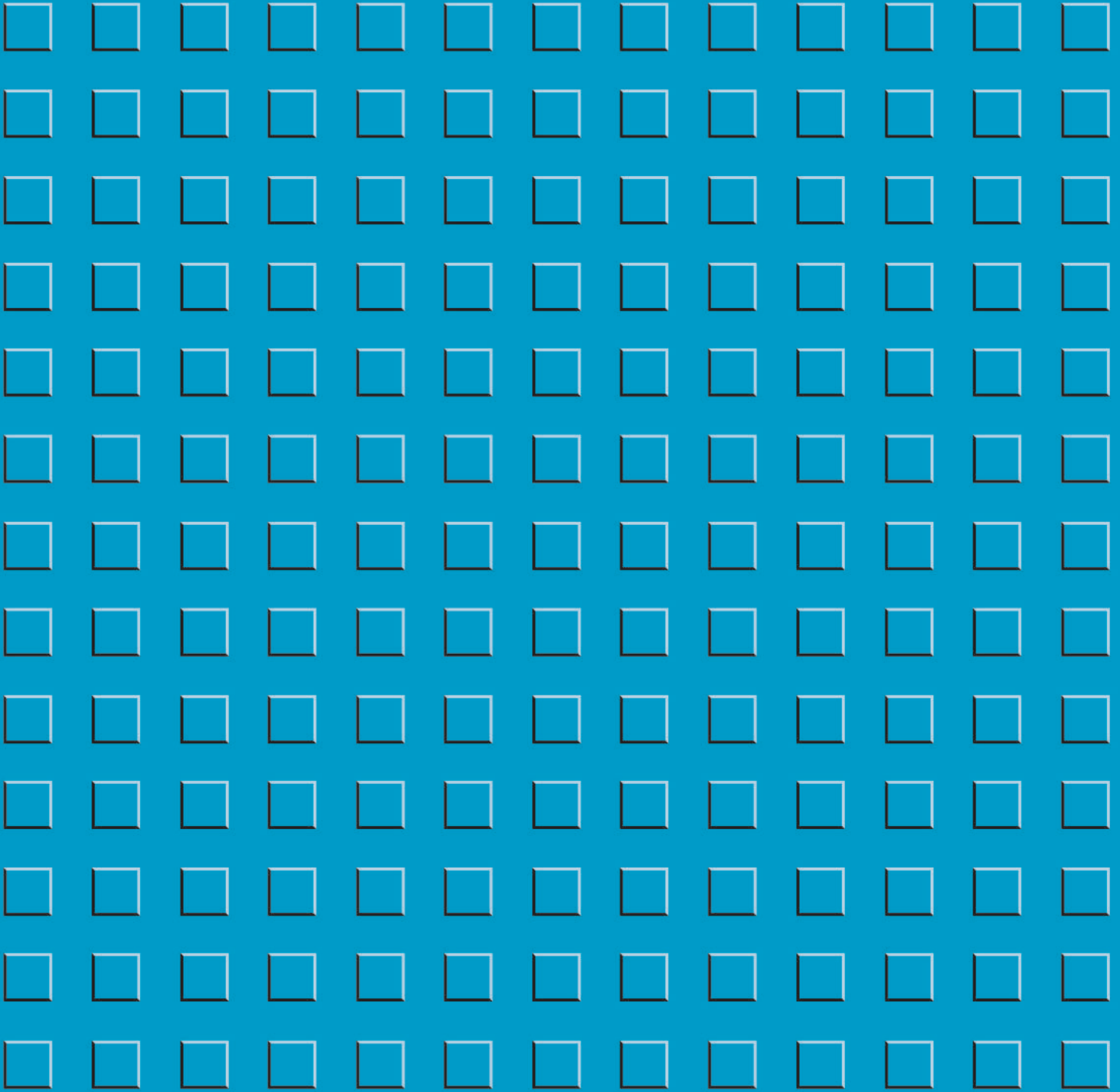
Conduit Body-Type T

Material	Aluminium Epoxy Powder Coating	Ferrous Hot Dipped Galvanised
Size (in)	Item Code	Item Code
3/4"	PB7T-075A	PB7T-075F
1"	PB7T-100A	RB7T-100F
1-1/4"	PB7T-125A	RB7T-125F
1-1/2"	PB7T-150A	RB7T-150F
2"	PB7T-200A	RB7T-200F
2-1/2"	PB7T-250A	RB7T-250F
3"	PB7T-300A	RB7T-300F
4"	PB7T-400A	RB7T-400F



Conduit Body-Type C

Material	Aluminium Epoxy Powder Coating	Ferrous Hot Dipped Galvanised
Size (in)	Item Code	Item Code
3/4"	PB7C-075A	PB7C-075F
1"	PB7C-100A	RB7C-100F
1-1/4"	PB7C-125A	RB7C-125F
1-1/2"	PB7C-150A	RB7C-150F
2"	PB7C-200A	RB7C-200F
2-1/2"	PB7C-250A	RB7C-250F
3"	PB7C-300A	RB7C-300F
4"	PB7C-400A	RB7C-400F



DESCRIPTIVE MATTER AND ILLUSTRATION : (a) All descriptions and illustrations and particulars of weights and dimensions and performance criteria issued by the Company in catalogues, price lists, advertising matter and specifications are by way of general descriptions and approximate only and shall not form part of any contract or give rise to any liability on the part of the Company. (b) It is the policy of the Company to endeavour to develop and improve its products, and accordingly the Company reserves the right to change all specifications without prior notification or public announcement pursuant to such policy, provided that nothing in this clause shall oblige the Purchaser to accept goods which do not reasonably comply with the contract.



COPYRIGHT : All drawings, descriptions and other information submitted by the Company shall remain the property of the Company together with the copyright therein this catalogue.



(*Company* means Insteel (Malaysia) Sdn Bhd)

